



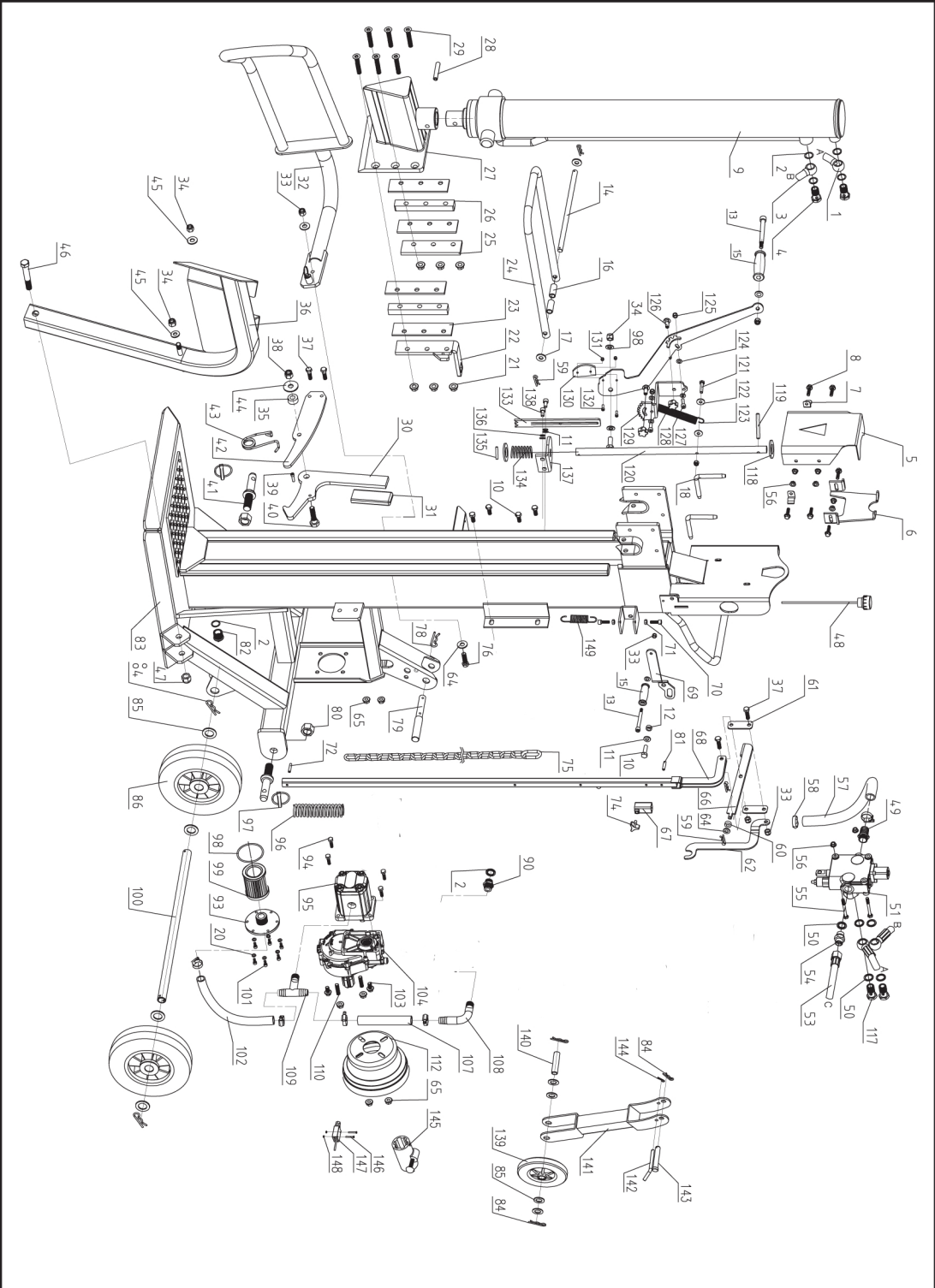
I

ESPLOSO RICAMBI

GB

EXPLODED VIEW

Spaccalegna/Log splitter
RAM Cod. 92304



Pos	AMA	Cod	Description	Qty
1	SPK-2RM0001		Upper High Pressure Hose	1
2	SPK-2RM0002		Seal Kit 22	5
3	SPK-2RM0003		Lower High Pressure Hose	1
4	SPK-2RM0004		Hose Link	2
5	SPK-2RM0005		Upper Guard	1
6	SPK-2RM0006		cylinder Lock Plate	1
7	SPK-2RM0007		Pin Holder	2
8	SPK-2RM0008		Bolt M8X35(65687,65692)	6
9	SPK-2RM0009		Cylinder	1
10	SPK-2RM0010		Bolt M10x25	5
11	SPK-2RM0011		Washer 10	3
12	SPK-2RM0012		Sleeve 2	1
13	SPK-2RM0013		Bolt	2
14	SPK-2RM0014		Shaft	1
15	SPK-2RM0015		Grip	2
16	SPK-2RM0016		Sleeve	2
17	SPK-2RM0017		Flat Washer 12	2
18	SPK-2RM0018		Cylinder pin	2
19	SPK-2RM0019			1
20	SPK-2RM0020		Flat Washer 6	6
22	SPK-2RM0022		Right Plate	1
23	SPK-2RM0023		Friction Plate	4
24	SPK-2RM0024		Control U-Handle	1
25	SPK-2RM0025		Left Plate	1
26	SPK-2RM0026		Baffle Plate	2
27	SPK-2RM0027		Wedge Weldment	1
28	SPK-2RM0028		Pin 12X70	1
29	SPK-2RM0029		Screw M12X70	6
30	SPK-2RM0030		Retaining hook	1
31	SPK-2RM0031		Grip	1
32	SPK-2RM0032		Guard Bracket Left	1
33	SPK-2RM0033		Locknut M10	9
34	SPK-2RM0034		Locknut M12	2
35	SPK-2RM0035		Locating Sleeve	1
36	SPK-2RM0036		Hoist Guard	1
37	SPK-2RM0037		Bolt M10X35	4
38	SPK-2RM0038		Nut M14	1
39	SPK-2RM0039		Screw M6X10	1
40	SPK-2RM0040		Screw	1
41	SPK-2RM0041		Pin	2

42	SPK-2RM0042	Locating Plate	1
43	SPK-2RM0043	Reset torsion Spring	1
44	SPK-2RM0044	Washer 14	1
45	SPK-2RM0045	Big Washer 12	1
46	SPK-2RM0046	Bolt M6x90	1
47	SPK-2RM0047	Nut M16	1
48	SPK-2RM0048	Oil Dipstick	1
49	SPK-2RM0049	Hose Connector	1
50	SPK-2RM0050	Sealing Kit 20	5
51	SPK-2RM0051	Valve	1
53	SPK-2RM0053	High Pressure Hose 2 D12	1
54	SPK-2RM0054	Nipple M20x1.5-M22x1.5	1
55	SPK-2RM0055	Bolt M8X65	2
56	SPK-2RM0056	Nut M8	8
57	SPK-2RM0057	Oil Return Hose	1
58	SPK-2RM0058	Hose Clamp	4
59	SPK-2RM0059	Pin 3	2
60	SPK-2RM0060	Round Plate	1
61	SPK-2RM0061	Valve Connecting Plate	2
62	SPK-2RM0062	Limit Plate	1
64	SPK-2RM0064	Big Washer 10	2
65	SPK-2RM0065	Nut M10	9
66	SPK-2RM0066	Pressing Plate	1
67	SPK-2RM0067	Adjusting Sleeve	1
68	SPK-2RM0068	Pull Rod	1
70	SPK-2RM0070	Screw M8X25	4
71	SPK-2RM0071	Nut M8	4
72	SPK-2RM0072	Pin 6x45	1
74	SPK-2RM0074	Knob	1
75	SPK-2RM0075	Hoist Chain	1
76	SPK-2RM0076	Bolt M10X40	1
78	SPK-2RM0078	R-Pin	1
79	SPK-2RM0079	Pin	1
80	SPK-2RM0080	Nut M22X1.5	2
81	SPK-2RM0081	Pin 6x35	1
82	SPK-2RM0082	Screwed Plug	1
83	SPK-2RM0083	Main Frame	1
84	SPK-2RM0084	R-Pin	3
85	SPK-2RM0085	Washer 24	4
86	SPK-2RM0086	Wheel 10"	2
90	SPK-2RM0090	Nipple ZG 1/2-M22x1.5	2

93	SPK-2RM0093	Flange Plate	1
94	SPK-2RM0094	Bolt M8X30	4
95	SPK-2RM0095	Gear Pump 1	1
96	SPK-2RM0096	Spring	1
97	SPK-2RM0097	Elastic Ring Pin Assy.	2
98	SPK-2RM0098	O-Ring 81x3.1	1
99	SPK-2RM0099	Oil Filter	1
100	SPK-2RM0100	Wheel Axle	1
101	SPK-2RM0101	Screw M6X14	6
102	SPK-2RM0102	Suction Hose 1	1
103	SPK-2RM0103	Bolt M10x20	2
104	SPK-2RM0104	Accelerator	1
108	SPK-2RM0108	Low Pressure Elbow Part	1
110	SPK-2RM0110	Set Screw M10X40	2
112	SPK-2RM0112	Spline Shaft Sheath	1
117	SPK-2RM0117	Valve Connector	2
118	SPK-2RM0118	Flat Washer 22	2
119	SPK-2RM0119	Cylindrical Pin 8x70	1
120	SPK-2RM0120	Adjusting Bar	1
121	SPK-2RM0121	Bolt M8X45	1
122	SPK-2RM0122	Flat Washer 8	2
123	SPK-2RM0123	Reset Tension Spring	1
124	SPK-2RM0124	Washer 8	4
125	SPK-2RM0125	Locknut M8	3
126	SPK-2RM0126	Bolt M8x20	2
127	SPK-2RM0127	Bolt M8x20	2
128	SPK-2RM0128	Adjusting Knob M8	2
129	SPK-2RM0129	Log Fixing Claw	1
130	SPK-2RM0130	Cam Friction Pad	1
131	SPK-2RM0131	Locknut M5	2
132	SPK-2RM0132	Bolt M5X16	2
133	SPK-2RM0133	Extended Log Fixing Claw	1
134	SPK-2RM0134	Reset Spring	1
135	SPK-2RM0135	Cylindrical Pin 5x35	1
136	SPK-2RM0136	Spring Washer 10	2
137	SPK-2RM0137	Support Plate	1
138	SPK-2RM0138	Bolt M10X20	2
139	SPK-2RM0139	Support Wheel	1
140	SPK-2RM0140	Pressing Lever	1
141	SPK-2RM0141	Support Arm	1
142	SPK-2RM0142	Pin 12	1

143	SPK-2RM0143	Rotating Shaft	1
144	SPK-2RM0144	R-Pin	1
149	SPK-2RM0149	Spring	1